

# Rainbow Bend

May 2010 Vol. 17, Issue 05



## THE GIFT

THE GIFT is a program initiated by the Walk to Emmaus/Chrysalis movements to ensure that many from all over the world can enjoy the fruits of this beautiful ministry. THE GIFT is a financial program that allows the international communities as well as the emerging new communities to tap into the generosity of pilgrims and butterflies that the Lord has so richly blessed. Here are some facts that you may not know:

- \* The Chrysalis and Walk to Emmaus movements are interdenominational, interracial and international.
- \* The Emmaus movement began in 1978 and the Chrysalis movement began in 1985.
- \* More than one million Christians have experienced a Chrysalis or Walk to Emmaus weekend.
- \* The 600 Emmaus and Chrysalis communities are in 38 countries and 12 countries respectively.
- \* Our resources have been translated into 13 languages on 6 continents.
- \* We do not receive any funds or money from the United Methodist Church or any church denomination.
- \* Internationally, we need funds to assist emerging communities that do not have the resources to secure facilities, provide scholarships, train and teach team participants and conduct weekends.
- \* In the United States, we want to bring our Leadership Development Program resources into the 21st century through the use of technology that will empower leaders in each Community.

If you feel the Holy Spirit calling you to respond to "THE GIFT" of grace that you received on your Walk, make your check payable to: **International Walk to Emmaus and Chrysalis** and send your offering of love to:

**The International Emmaus/Chrysalis Office**  
1908 Grand Avenue, Nashville,  
TN 37213 1-877-899-2780 Ext. 7227

Visit our website to view or subscribe to our newsletter, how we are fulfilling needs and to stay connected: [www.upperroom.org/emmaus](http://www.upperroom.org/emmaus) or [www.upperroom.org/chrysalis](http://www.upperroom.org/chrysalis)

## Meeting Emmaus Board Openings



- \* Agape Coordinator, who is responsible for maintaining list of community agape for Walk Lay Directors



- \* Music Director, who helps with Music team selection for Walks and Candlelight.

## Chrysalis News

Summer is fast upon us and the Chrysalis Community is busy preparing for the amazing butterflies that we will meet this June. Chrysalis is designed for High School students who are 15 years old and have completed their freshman year in High School and College age students who are between 19 – 24 years old. It is an awesome experience for our young people to see how much our Lord Jesus Christ loves them and how He desires a personal relationship with them. We have openings in both the boys and girls flights. The cost for the weekend is \$160.00 (some scholarships are available).

Please visit our website at [coastalbendchrysalis.org](http://coastalbendchrysalis.org) for applications and more information.

The boy's flight is June 17-20, 2010 and the girl's flight is June 24-27, 2010.

DeColores,  
Janice Deonarine Community Lay Director

It has been an amazing, challenging and growing experience serving as the CBEC Lay Director. I am humbled to have the privilege to serve our community, for Corpus Christi is truly the Body of Christ. I've noticed while each Walk is special and unique, they also have a common thread that ties them together- Jesus Christ. No wonder they are all THE BEST WALK EVER!

When we set aside three days to be with the Lord, He shows up every time. When we serve as His hands and feet, He never fails to bless our work. When we surrender our hearts, He takes away our pain and replaces it with joy. When we pray, He makes our paths straight.

We joke that serving on a team means working long hours, getting no recognition with very little sleep and then having to pay money on top of that. Is that crazy? Not when you are walking and serving alongside Jesus. It gives you a little insight into Paul's statement, "But whatever things were gain to me, those things I have counted as loss for the sake of Christ. More than that, I count all things to be loss in view of the surpassing value of knowing Christ Jesus my Lord" Philippians 3:7-8.

Sign up for a Walk to Emmaus and you will have the opportunity to witness firsthand the surpassing value of knowing Christ Jesus my Lord. On this last Men's Walk, a sponsor told his pilgrim, "I'm going to take you to heaven this weekend". Amen brother, surely we were walking on holy ground!

Are you hurting, are you thirsty, are you empty or unfulfilled? Jesus has set the table and invites all those who want to know Him. Come, you won't be disappointed.

In His Amazing Love,  
Gail Anderson

### For all Emmaus musicians

You may have already heard that changes in the guidelines for the Walks have occurred. We are convening a short training session (approximately one hour) to update everyone about the changes that affect music teams and review guidelines that are already in place. Attendance is mandatory for anyone who wishes to be a Music Director in the future. The meeting will take place on:

Tuesday, May 25, 2010  
7:00 p.m.

Covenant Baptist Church  
7001 Williams Drive

(Please RSVP by phone (854-4418) or email ([jbailey1@grandecom.net](mailto:jbailey1@grandecom.net)) by Sunday, May 23<sup>rd</sup>.)

I want to thank each of you in the Journey To Damascus, Walk To Emmaus and Chysalis Communities for your prayers and support this year. I'm truly blessed to be able to serve Christ along side each of you. As the Journey To Damascus enters it's second decade, there are many exciting opportunities. The Houston Community is growing stronger every day and there is a contingent of people planning an Austin Community as well. This year will see 8 Journey weekends in Corpus Christi and 3 more in Houston. In addition, the new Journey Board of Trustees has been busy with shaping and guiding the Journey Process. It's been inspiring to me to watch so many people from so many faith backgrounds working together for Christ. My prayer is that we continue to work closely as we serve our Risen Saviour. May God richly bless each of you, Maury Jarrell, President, Corpus Christi Journey To Damascus Board of Directors

### JTD #81 Thank You

Journey to Damascus #81 was a total success. Pilgrims and team members alike left the retreat center on a renewed high. Praise God! None of this could have been possible without an entire community effort and for that I am thankful. Special thanks to all those who attended candlelight, Thanks to the pilgrims for giving Christ your YES and allowing us the team of JTD #81 to serve as HE has commanded. Last but not least, sincere thanks to the creator of the world, King of Kings and Lord of Lords, Jesus Christ our Savior for he truly knows the plans he has in mind for us.

DeColores  
Rene Bocanegra  
Jeremiah 29:11





# Corpus Christi Men's JTD #84

May 13-15, 2010  
Marty Adrian LD



*"I have been crucified with Christ, and yet I live, no longer I, but Christ lives in me"*  
**Galatians 2:19-20**

I feel truly honored to be leading JTD #84, but I could not have done any of this without the help of the Holy Spirit and the "Dream Team." We have been truly blessed with a full roster of Pilgrims. Please continue to pray for our pilgrims, that they may be brought closer to God and completely surrender to the one that took our place. I extend a personal invitation to each of you to come to Candlelight and show the pilgrims the love of our Damascus, Emmaus, Chrysalis, Siloam and Kairos Community. Thank you all for your never-ending support, agape, letters and service to the pilgrims and the team. And thank you once again for allowing me the opportunity to humbly serve our God and plant a seed in the hearts of the pilgrims and the team. I look forward to seeing you at Candlelight.

Your Brother in Christ,  
Martin "Marty" Adrian, LD

### St. Elsewhere

Marty Adrian	LD
Fr. Paul Hesse	SD
Sister Angela Murdaugh	ASD
Rev. Tom Ferrell	ASD
Fr. Tung Tran	ASD
Ron Enderle	ALD
Shawn Christopher	ALD
Mark Roach	ALD
Charles Allen	Bd Rep
Jim Stegall	Obs. LD

### TL & AT!

- Larry Grove
- Adrian Galindo
- Tim Jones
- Adrian Hernandez
- John Curry
- Jeff Hunt
- Tom Nier
- Jack Baker
- Ray Mendez
- Darron Bergstrom
- Mike Jaks
- Mark Montez

### CHAs

- Richard Dodson
- John Michael
- John Kummer
- Phillip Benavides
- Felipe Salazar
- Steve Bernal
- Kenny Koch
- Manuel Ugues
- Leo Laughlin
- David Weaver
- Arthur Haas
- David Lewis
- Tomas Duran
- Ron Alonzo
- Chris Grove
- Aaron Hoelscher
- Rick Arevalo
- Josh Taft
- Mike Devaney

Head CHA  
Co-Head CHA

(Chas Cont)

- Robert Duenez
- Gary Knobles
- Juan Narvaez

### Music Team

Rick Svetlik	MD
Ray Ray Paz	MT
Randy Cartwright	MT
Gary Richards	MT
Vernon Haney	MT

### Cooking Team

- Javier Gonzalez
- Hector Gonzalez
- Josh Smith
- Santos Ronje



### Pilgrims

- Blaine Weaver
- Blake Weaver
- John North
- Ross Boswell
- Brian Devaney
- Darvin Jones
- Roel Gonzalez
- Albert Saenz
- Marc Cervantes
- Willie Rivera
- Lathen Holt
- Joseph Chase
- Randy Eulenfeld
- Jaime Armendariz
- Andre` Adrian
- J. Luis Gonzalez
- Bill Odom
- Donald Larson
- Mason Berry
- Lawrence Berry
- Roland Benavides
- Martin Saenz Jr.
- Michael Jensen
- Billy Bartosh
- Charlie Remondet
- Mike Johnson
- Stephen Ramos
- Anthony Elwin
- Robert Rodriguez
- Rudy Sturgeon
- Deacon Teo Farias
- Robert Casas
- Kris Havelka
- Russell Canales

### COMMUNITY SCHEDULE

Thursday, May 13, 2010  
Sponsor's Hour 6:30PM

Saturday, May 15, 2010  
Candlelight Service 8:00PM

Sunday, May 16, 2010

### TALK SCHEDULE

#### May 14, 2010

8:30AM	Priorities	Adrian Galindo
10:30AM	Grace	Fr. Paul Hesse
1:10PM	Priesthood of all Believers	Ron Enderle
2:30PM	Faith	Rev. Tom Ferrell
6:50PM	Life in Piety	Tom Nier

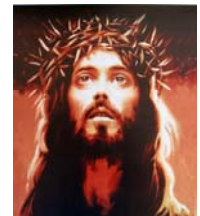
#### May 15, 2010

8:00AM	Growth through Study	John Curry
9:40AM	Sacraments	Fr. Tung Tran
1:45PM	Christian Action	Larry Grove
3:05PM	Obstacles to Grace	Sister Angela Murdaugh
6:25PM	Discipleship	Mark Roach
8:15PM	Love & Unity	Anna Adrian

#### May 16, 2010

9:15AM	Changing Our World	Adrian Hernandez
10:15AM	Body of Christ	Shawn Christopher
11:25AM	Perseverance & 4 <sup>th</sup> day	Martin Adrian

(cont)



# Future Events

<b>CC W JTD #85</b> June 10-13, 2010 Donna De Gaish	<b>Boy's Chrsalis Flight</b> June 17-20, 2010\ Danny Dobson LD	<b>Girl's Chrysalis Flight</b> June 24-27, 2010 Abigail Rackley LD
---	--	--

**Newsletter Editor**  
 Bob Holder  
 4706 Rogerson Dr.  
 Corpus Christi, TX 78415  
 (361) 334-5386 editorcebc1@gmail.com

**Database Coordinator**  
 Lisa Nunez  
 P.O. Box 12  
 Bishop TX 78343  
 (361) 584-8908 databsecbec@gmail.com

**Emmaus Information**  
 Coastal Bend Emmaus Community  
 PO Box 324  
 Corpus Christi, TX 78403  
 H (361) 854-6326 C (361) 816-6937

**JTD Information**  
 5620 Gollihar Rd.  
 Corpus Christi, TX 78412  
 Voice Mail: 1-888-546-7382  
 j2damascus@yahoo.com

**Chrysalis Information**  
 Janice Deonarine  
 P.O. Box 6830  
 Corpus Christi, TX 78466  
 361-739-6323 janice@christpointchurch.com

C  
O  
N  
T  
A  
C  
T  
S



**Don't Forget**  
**Sign Up**  
**Praying hands**  
**ForThe**  
**Prayer Vigil**  
**Online**



**[www.coastalbendemmaus.org](http://www.coastalbendemmaus.org)**

<b>2008/2009 EMMAUS BOARD</b> Lay Director            Gail Anderson Asst. Lay Dir.         Judi Storms Co-Spiritual Directors   Rev. Gloria Lear Rev. Jason Adams Treasurer                Gale Bridgeman  Website: <b><a href="http://www.CoastalBendEmmaus.org">www.CoastalBendEmmaus.org</a></b>	<b>2008/2009 DAMASCUS BOARD</b> President                Maury Jarrell Vice President         Steve Tagliabue Spiritual Director     Father Tom Goodwin Asst SD's                Rev. Billy Storms  Treasurer                Leonard Lee  Website: <b><a href="http://www.JourneyToDamascus.org">www.JourneyToDamascus.org</a></b>	<b>2010 CHRYSALIS BOARD</b> Lay Director            Janice Deonarine Asst. Lay Dir.         Ryan Luna Spiritual Director     Rev. Chuck Miller  Website: <b><a href="http://www.ChrysalisCoastalBend.org">www.ChrysalisCoastalBend.org</a></b>
---	---	--

Non-Profit Organization  
 U.S. Postage  
 PAID  
 Corpus Christi, TX  
 Permit No. 39

*Return Service Requested*  
 Coastal Bend Emmaus Community  
 P.O. Box 12  
 Bishop TX 78343